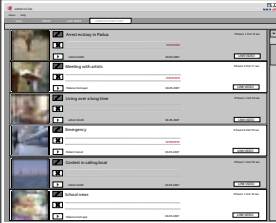


# WONDERCUBE® NEWSROOM - PRODUCTION WORKFLOW

# NEWSROOM

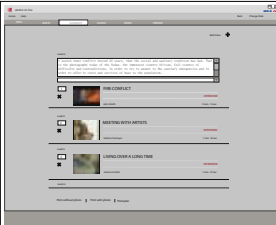
## DRAFTING OF SCHEDULE.

Creation of daily reports schedule. It can be immediately shared by the journalists over the network.



## REPORT MAKING.

The journalists browse the repertory footage, get new videos and interviews, and write the text for the report. Once the report has been edited, the System automatically inserts it into the schedule, according to the order decided by the editor in chief.



## SCHEDULE REVIEW.

The editor in chief can consult the news schedule from his own office. He can view all reports created by his staff in low resolution. He can delete them, add to them, or simply modify the broadcasting order. The journalist can type each report lead-ins directly on the schedule.

## AUTOMATIC UPDATING.

Video reports and studio text (prompter) can be automatically updated for last minute modifications.



### a) REPORTS.

Reports are sent to the control room automatically according to the schedule.

### b) LEAD-INS.

Lead-ins are automatically sent to the prompter.



## AUTOMATIC ARCHIVING.

Every report done is automatically archived both in high and low resolution. Titles, key words, texts, names of interviewees and any other data inserted during creation of the report, all comes together into an archive database, to be browsed.

